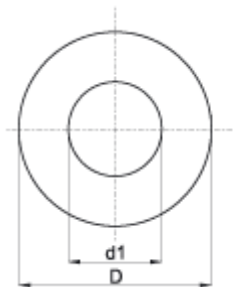


Podkładka wg DIN 34815 (poprzednio DIN 125)



Symbol	D	d1	h	Wymiar
639.001	4,0	1,7	0,3	M1,6
639.002	4,5	1,8	0,3	M1,7
639.003	5,0	2,2	0,3	M2
639.004	6,0	2,5	0,5	M2,3
639.005	6,5	2,7	0,5	M2,5
639.006	7,0	2,8	0,5	M2,6
639.007	7,0	3,2	0,5	M3
639.008	8,0	3,7	0,5	M3,5
639.009	9,0	4,3	0,8	M4
639.010	10,0	5,3	1,0	M5
639.011	12,0	6,4	1,6	M6
639.012	12,5	6,4	1,6	M6
639.013	14,0	7,4	1,6	M7
639.014	16,0	8,4	1,6	M8
639.015	17,0	8,4	1,6	M8
639.016	20,0	10,5	2,0	M10
639.017	21,0	10,5	2,0	M10
639.018	24,0	13,0	2,5	M12
639.019	28,0	15,0	2,5	M14
639.020	30,0	17,0	3,0	M16
639.021	34,0	19,0	3,0	M18
639.022	37,0	21,0	3,0	M20
639.023	39,0	23,0	3,0	M22
639.024	44,0	25,0	4,0	M24
639.025	50,0	27,0	4,0	M26
639.026	50,0	28,0	4,0	M27
639.027	50,0	29,0	4,0	M28
639.028	56,0	31,0	4,0	M30
639.029	60,0	33,0	5,0	M32
639.030	60,0	34,0	5,0	M33
639.031	66,0	36,0	5,0	M35
639.032	66,0	37,0	5,0	M36

639.033	72,0	39,0	6,0	M38
639.034	72,0	40,0	6,0	M39
639.035	72,0	41,0	6,0	M40

→ Materiał: poliamid

→ Istnieje możliwość wykonania elementów z innego rodzaju tworzywa jak: PP, PE, PVDF i PTFE

→ Kolor: naturalny / RAL – lub kolory specjalne na życzenie