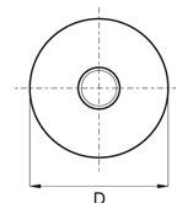
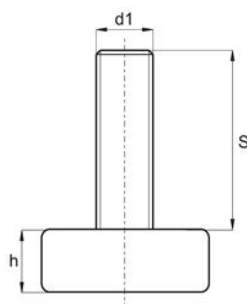


Stopka stała



Materiał:

- Trzpień: stal ocynkowana
- Talerz: polipropylen

Kolor standardowy: czarny / powierzchnia matowa

→ Wykonanie na specjalne zamówienie:

- nacięcie na śrubokręt
- talerz w innych kolorach RAL lub kolorach specjalnych

| Symbol | D | h | d1 | S |
|---------|----|----|-----|----|
| 436.001 | 24 | 8 | M8 | 30 |
| 436.002 | 30 | 10 | M8 | 20 |
| 436.003 | 30 | 10 | M8 | 30 |
| 436.004 | 30 | 10 | M8 | 40 |
| 436.005 | 30 | 10 | M8 | 50 |
| 436.006 | 30 | 10 | M10 | 20 |
| 436.007 | 30 | 10 | M10 | 30 |
| 436.008 | 30 | 10 | M10 | 40 |
| 436.009 | 30 | 10 | M10 | 50 |
| 436.010 | 40 | 10 | M8 | 20 |
| 436.011 | 40 | 10 | M8 | 30 |
| 436.012 | 40 | 10 | M8 | 40 |
| 436.013 | 40 | 10 | M8 | 50 |
| 436.014 | 40 | 10 | M10 | 20 |
| 436.015 | 40 | 10 | M10 | 30 |
| 436.016 | 40 | 10 | M10 | 40 |
| 436.017 | 40 | 10 | M10 | 50 |
| 436.018 | 40 | 10 | M12 | 30 |
| 436.019 | 40 | 10 | M12 | 40 |
| 436.020 | 40 | 10 | M12 | 50 |

| | | | | |
|---------|----|------|-----|----|
| 436.021 | 50 | 11,5 | M10 | 20 |
| 436.022 | 50 | 11,5 | M10 | 30 |
| 436.023 | 50 | 11,5 | M10 | 40 |
| 436.024 | 50 | 11,5 | M10 | 50 |
| 436.025 | 50 | 11,5 | M12 | 30 |
| 436.026 | 50 | 11,5 | M12 | 40 |
| 436.027 | 50 | 11,5 | M12 | 50 |