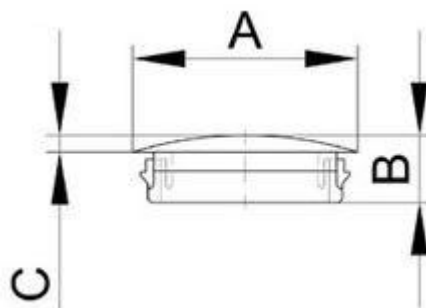


Zaślepka otworu montażowego

→ Materiał: polietylen

→ Rodzaj montażu:
wewnętrzny z zatraskiem



Symbol	Średnica otworu	A	C	B
054.001	4.7	6.4	1.1	4.7
054.002	6.4	7.9	1.6	6.3
054.003	7.9	9.5	1.6	6.3
054.004	9.5	11.9	1.6	8.7
054.005	11.1	13.5	1.6	8.7
054.006	12.7	14.7	1.6	8.7
054.007	14.3	16.7	1.6	8.7
054.008	15.9	18.2	1.6	8.7
054.009	17.4	19.8	1.6	8.7
054.010	19.1	23.4	1.6	8.7
054.011	20.6	22.6	1.6	8.7
054.012	22.2	25.8	1.6	8.7
054.013	25.4	30.6	1.6	9.9
054.014	28.0	30.9	1.6	9.9
054.015	30.1	33.3	1.6	9.9
054.016	31.8	34.9	1.6	9.9
054.017	34.9	38.1	1.6	9.9
054.018	38.1	42.4	1.6	9.9
054.019	44.5	48.4	1.6	9.9
054.020	50.8	55.1	2.3	9.9
054.021	53.8	59.5	2.8	16.3
054.022	57.8	61.5	2.8	16.3
054.023	63.5	69.0	2.8	16.3
054.024	76.2	80.5	2.8	16.3
054.025	85.7	92.9	2.8	16.3
054.026	88.9	92.9	2.8	16.3
054.027	101.6	105.6	2.8	16.3