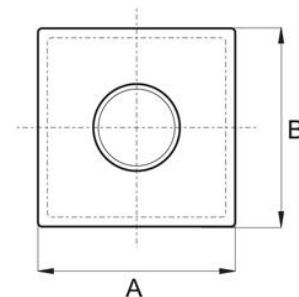
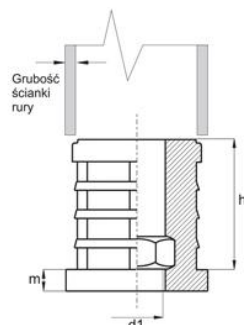


Zaślepka z wmontowaną nakrętką do profili prostokątnych lub kwadratowych



→ Materiał: poliamid

→ Nakrętka: stal ocynkowana

→ Kolor: czarny, RAL lub kolory specjalne na życzenie

Kod	A	B	d1	h	m	Grubość ścianki	F max (kg)
012.001	18	18	M8	34	5	1,0 - 1,5	300
012.002	20	20	M6	34	5	1,5 - 2,0	300
012.003	20	20	M8	34	5	1,5 - 2,0	300
012.004	20	20	M10	33	10	1,5 - 2,0	300
012.005	20	20	M8	34	5	2	300
012.006	22	22	M8	34	5	1,5 - 2,0	300
012.007	25	25	M8	34	5	1,0 - 1,5	300
012.008	25	25	M10	33	5	1,5	300
012.009	25	25	M8	34	5	2	300
012.010	25	25	M10	34	5	2	300
012.011	25	25	M10	33	10	3	300
012.012	30	30	M8	34	5	1,5 - 2,0	300
012.013	30	30	M10	34	5	1,5 - 2,0	300
012.014	30	30	M10	33	5	2,5	300
012.015	32	32	M10	34	5	2	300
012.016	35	35	M10	34	5	1,0 - 2,0	300
012.017	35	35	M12	34	5	1,5	300
012.018	35	35	M8	34	5	1,5 - 2,0	300
012.019	35	35	M12	34	5	1,5 - 2,0	300
012.020	35	35	M10	33	5	2	300
012.021	37.5	37.5	M10	36.6	5	1,5	300
012.022	40	40	M8	33	5	1,5 - 2,0	300
012.023	40	40	M10	25	5	1,5 - 2,0	300
012.024	40	40	M10	33	5	1,2 - 1,5	300

012.025	40	40	M12	33	5	1,5 - 2,0	300
012.026	40	40	M16	33	5	1,5 - 2,0	300
012.027	40	40	M8	34	5	2	300
012.028	40	40	M10	33	5	3	300
012.029	45	45	M8	34	5	1,5 - 2,0	300
012.030	50	50	M10	34	5	1,5	300
012.031	50	50	M8	34	5	2	300
012.032	50	50	M10	32	5	2	300
012.033	50	50	M10	33	5	2,5	300
012.034	50	50	M12	34	5	3	300
012.035	55	55	M10	34	5	2	300
012.036	60	60	M10	34	5	1,5 - 2,0	300
012.037	60	60	M12	34	5	1,5 - 2,0	300
012.038	80	80	M10	30	5	2	300
012.039	80	80	M12	30	5	2	300